

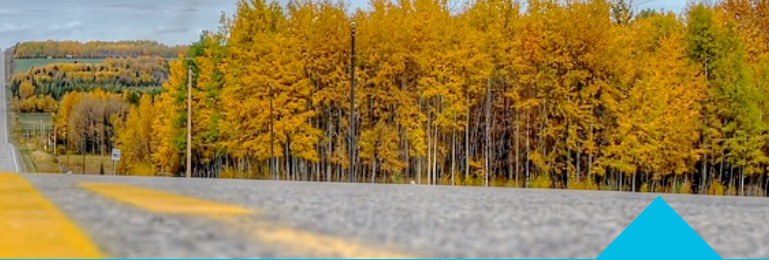
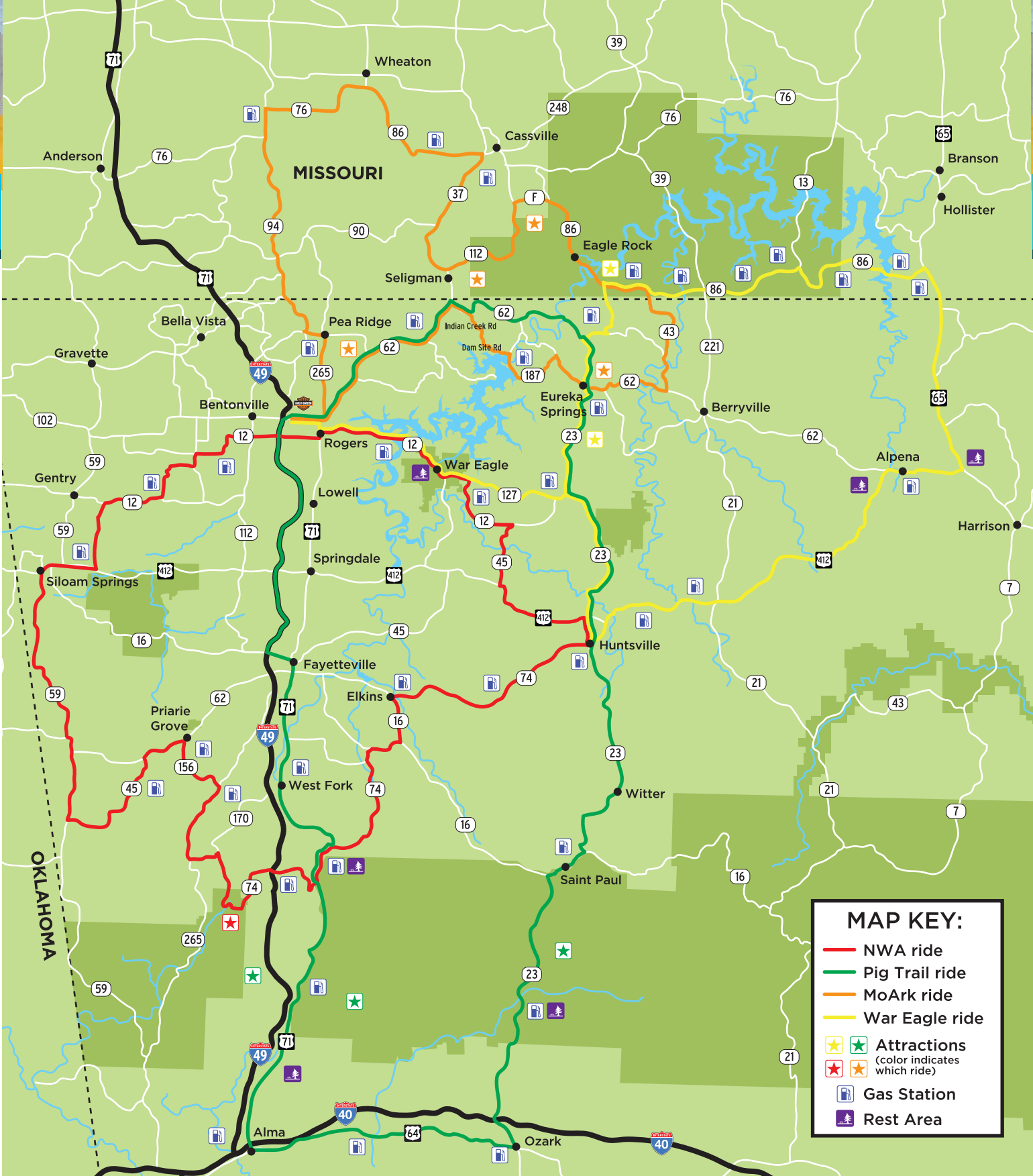
THE RIDES

MOARK RIDE
(Missouri has a Mandatory Helmet Law)
Total Mileage: 137.1

HWY TO HWY	MILEAGE	TOTAL
AR-12 E/Walnut St to N 2nd St	0.1	0.1
N 2nd St to 94W	1.7	1.8
94W to 76E	31.6	33.4
76E to 37S	23.2	56.6
37S to 112E	13	69.6
112E to F	9	78.6
F to 86 S/E	5.3	83.9
86 to 143S	14.5	98.4
143S to 62W	10.5	108.9
62W to 187	13	121.9
187 to Dam Site Rd	7.1	129
Dam Site Rd to Indian Creek Rd	3	132
Indian Creek Rd to S 62B/S 2nd St (Left at Stop Light)	3.3	135.3
S 2nd St to AR-12W/ Walnut St (Right at Light)	1.7	137
AR-12W to Chamber	0.1	137.1

WAR EAGLE RIDE
(Missouri has a Mandatory Helmet Law)
Total Mileage: 189.3

HWY TO HWY	MILEAGE	TOTAL
AR-12E/Walnut St to N 2nd St	0.1	0.1
N 2nd St to AR-12E	0.3	0.4
AR-12E to 23N	29	29.4
23N to 86E	23.5	52.9
86E to 65S	33	85.9
65S to 412W	19	104.9
412W to 23N	41	145.9
23N to AR-12W	14	159.9
AR-12W to S 2nd St/S 62B	29	188.9
S 2nd St to AR-12W/Walnut St	0.3	189.2
AR-12W to Chamber	0.1	189.3



THE RIDES

NWA RIDE
Total Mileage: 178.1

HWY TO HWY	MILEAGE	TOTAL
AR-12E/Walnut St to N 2nd St	0.1	0.1
N 2nd St to AR-12E	0.3	0.4
AR-12E to 45S	18.8	19.2
45S to 412E	9	28.2
412E to 412B	7.8	36
412B to 74W	2.7	38.7
74W to 16E (Left to Brashears)	19.2	57.9
16 E to WC 57	4.1	62
WC 57 to WC 43 (Left on WC43)	2.8	64.8
WC 43 to 71S	11.7	76.5
71S to 74W	3.5	80
74W to 170	13.2	93.2
170 to 265N	6.9	100.1
265N to CR 28		
(Left at Zip Trip Store)	9.6	109.7
CR 28(Hogeye Rd) to 62W (Buchanan Rd)	6.4	116.1
62W to 45S	4.1	120.2
45S to 59N	10.6	130.8
59N to 62W	6.1	136.9
62W to 59N	1.6	138.5
59N to 412E	6	144.5
412E to Left on Fairmont Rd	4.9	149.4
Fairmont Rd to AR-12E (No Hwy Sign, Right at Stop Sign)	5.8	155.2
AR-12E to Chamber	22.9	178.1

PIG TRAIL RIDE
Total Mileage: 216.5

HWY TO HWY	MILEAGE	TOTAL
AR-12E/Walnut St to N 2nd St	0.1	0.1
N 2nd St to 62E	1.5	1.6
62E to 23S	32.4	34
23S to 64W	85	119
64W to 71N	25	144
71N to I-49N	45	189
I-49N to Exit 85(Turn Right)	24	213
AR-12 E/Walnut St to Chamber	3.5	216.5



WHERE TO SHOP

Frisco Station Mall

Walnut Street & Dixieland Road
www.friscostationmall.com

Frisco Station Mall is a 242,535 square foot, one level shopping center. The center is anchored by Hobby Lobby and has 25 fine stores you won't find anywhere else in Rogers.

Downtown Rogers

Walnut Street and First Street
www.mainstreetrogers.com

The downtown Rogers area is a magical blend of sights, sounds, aromas, tastes, textures, generations and cultures. It is a melting pot where business, dining, creativity, shopping, art, music, commerce, history, professional services, theater, etc., come together to form a vibrant community.

Pinnacle Hills Promenade

2203 Promenade Blvd. | Rogers, AR 72758
Phone: 479.936.2160
Pinnaclehillspromenade.com

Shop the Promenade's unmatched collection of premium retailers while you stroll among elegant shops and lush landscaping. Several premium restaurants and a Malco 12-screen theatre offer you something new during your time in Rogers.

Scottsdale Center

Walnut Street & 48th Street
www.scottsdale-center.com

This large shopping center is home to dozens of national retail chains, both large and small. Restaurant row is full of a variety of dining options, sure to satisfy your appetite. Scottsdale Center is also home to a Malco theater and several hotels.

Village on the Creeks

Horsebarn Road and I-540

This is the perfect place to enjoy a patio meal, unique shops, and lakeside picnic. Or just sit back, relax, and let the hassles dissolve amid our richly landscaped properties accented by fountains, streams, sculptures, and gardens. More than just a destination, Village on the Creeks is your lifestyle center!

WHERE TO STAY

Aloft

1103 S. 52nd St. | Rogers, AR 72756
479.268.6799 | 877.goaloft
www.aloftrogers.com

Candlewood Suites

4601 West Rozell St. | Rogers, AR 72756
479.636.2783 | 800.541.4998
www.candlewoodsuites.com

Country Inn & Suites

4304 West Walnut St. | Rogers, AR 72756
479.633.0055 | 888.201.1746
www.countryinns.com/bentonvillear

Embassy Suites

3303 Pinnacle Hills Pkwy. | Rogers, AR 72756
479.254.8400
800.362.2779
www.embassysuitesnwa.com

Fairfield Inn & Suites

4611 West Rozell St. | Rogers, AR 72756
479.936.5900
800.228.2800
www.marriott.com/rogfi

Guest Inn

1601 South 8th St. | Rogers, AR 72756
479.636.1733
www.guestinnrogers.com

Hampton Inn

4501 West Walnut St. | Rogers, AR 72756 479.986.0500 | 800.426.7866
www.bentonvillerothers.hamptoninn.com

Holiday Inn & Suites

1803 S. 52nd St. | Rogers, AR 72756
479.845.1300 | 888-HOLIDAY
www.holidayinn.com/rogersar

Homewood Suites

4302 West Walnut St
479.636.5656 | 800.225.5466
www.bentonvillerothers.homewoodsuites.com

MOARK RIDE

Approximately 155.2 miles

If you are looking for a ride that gives you the best of both Arkansas and Missouri, this is the ride for you. The ride is roughly 155.2 miles. As you travel the MoArk ride you will travel through state parks, recreation areas and a celebrated forest. This will take you through curvy roads and exquisite scenery along the border of both states. Along this ride, take the occasional stop at the attractions along the way and take pleasure in your surroundings.

ATTRACTIONS ALONG THE WAY:

Pea Ridge Battlefield Park

Northeast of Rogers- along U.S. 62

Hours: 8:30 a.m to 4:30 p.m. (year round)

(Closed on Thanksgiving, Christmas, and New Year's Day)

Phone: 479.451.8122

www.nps.gov/peri/index.htm

Mark Twain National Forest

Missouri 17- Hartshorn

Missouri 65479

Phone: 573.364.4621

www.fs.usda.gov/mtnf

Roaring River State Park

12716 Farm Road 2239

Cassville, Missouri 65625

Hours: Sunrise to 10 p.m. (year round)

Phone: 417.847.2539

www.mostateparks.com

Golden Pioneer Museum

Intersection of Hwy 86 & Hwy J

Golden, Missouri

Open April 1st through October 31st

Hours: Tuesday - Saturday 10:30 a.m. to 4:30 p.m.

Phone: 417.271.3300 or 417.271.3457

www.goldenpioneermuseum.org

WHAT TO SEE

No matter what your interests, there's no shortage of things to do here in Rogers. Whether you want to hike a scenic trail, visit the Daisy Airgun Museum or just sip a latte and do a little window-shopping in our beautiful downtown—the opportunities and the experiences in and around our city are boundless.

Cabela's

2300 Promenade Blvd | Rogers, AR 72758
479.616.1925
CabelasStore.com/Rogers

Daisy Airgun Museum

202 W. Walnut | Rogers, AR 72756
Phone: 479.986.6873
Daisymuseum.com

Hobbs State Park

20201 E. Hwy 12 | Rogers, AR 72756
Phone: 479.789.5000
Hobbs State Park

House of Webster

1013 North 2nd Street | Rogers, AR 72756
Phone: 479.636.4640
Houseofwebster.com

Rogers Historical Museum

322 S. 2nd St. | Rogers, AR 72756
Phone: 479.621.1154
Rogersarkansas.com/museum

Rogers Little Theater

116 S. 2nd Street | Rogers, AR 72756
Phone: 479.631.8988
Rogerslittletheater.org

Walmart AMP

5079 W. Northgate Rd. | Rogers, AR 72758
479.443.5600
ArkansasMusicPavilion.com

War Eagle Cavern

21494 Cavern Dr. | Rogers, AR 72756
Phone: 479.789.2909
Wareaglecavern.com

War Eagle Mill

11045 War Eagle Rd. | Rogers, AR 72756
Phone: 479.789.5343
Wareaglemill.com